

Coast to Capital Labour Market Information

East Surrey, West Sussex, Greater Brighton

Poster last updated October 2022



Employment

UK – 75.1%
LEP – 79.9%

Unemployment

UK – 4.2%
LEP – 3.7%

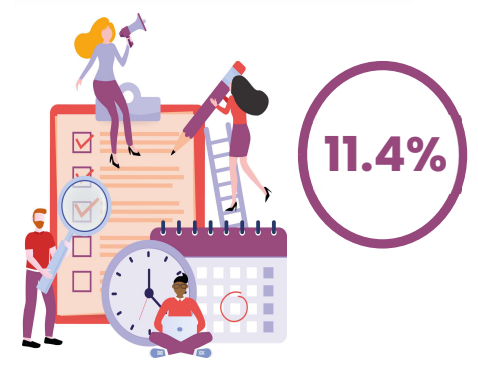
16–64-year-old population = 960,000
Total population = 1,565,700

Full-Time Salary



UK Average – £31,364
LEP Average – £32,994

Self-Employment



108,200 people in the region are self-employed

Apprenticeships

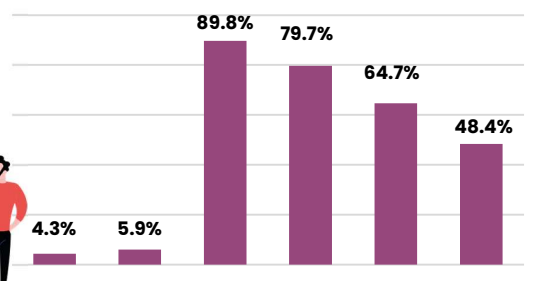
There are approximately 2493 live vacancies within a 40-mile radius of Crawley, including...

- Digital marketing
- Retail Sales
- Hair and beauty
- Catering and hospitality
- Early years
- Customer service
- Property maintenance/Construction
- IT and Digital
- Business admin
- Recruitment

Plus, many more! Find local opportunities on www.apprenticeships.gov.uk



Qualification Levels



79.7% people have at least a level 2 qualification such as GCSEs or an NVQ

Where do people work right now?

Most Jobs



Healthcare



Retail



Education

Fewest Jobs



Motor Trade



Mining, quarrying & utilities



Agriculture, forestry & fishing

What are some of the region's big-name employers?



Need careers advice? Call us on 0800 100 900, contact us online, or find us on Facebook and Twitter.

LMI obtained from the Office for National Statistics and Gov.uk.
Source: ONS Annual Population Survey on 16 Sept 2022 • Source: ONS Annual Population Survey on 16/9/2022
Source: ONS Population estimates – local authority based by five year age band • Source: ONS ASHE 2021
Source: LEP strategy docs • Source: Find an apprenticeship – searched on 16/9/22
Source: ONS Bres 2020 – Top 3 sectors – Highest number employed • Source: Lightcast job postings 12 months to August 2022 – excluding recruitment agencies